

# Capability Statement

New South Wales



# CONTENTS

**About Us**

**Core Values**

**Our Services**

**Town Planning**

**Land Surveying**

**Cadastral Surveying**

**Digital Mapping**

**Drafting**

**Our Workplace**

# ABOUT US

Parker Scanlon was established in 2007 by Registered Surveyors Bill Parker and Mark Scanlon. Their shared goal was to foster an environment that not only delivered exceptional professional outcomes, but that also supported and empowered the individuals who make them possible.

This was to be realised by implementing workplace changes that achieved a positive culture focused on people and processes.

This vision laid the foundation for Parker Scanlon's core values, which guide every decision and action, shaping the way our team approaches both work and client relations.

## Core Values

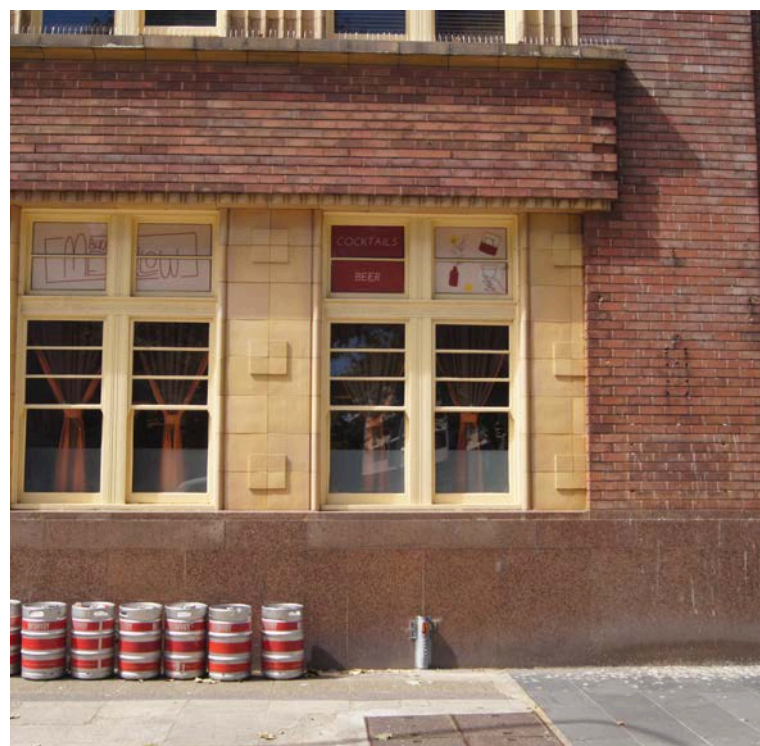
**Excellence**

**Integrity**

**Commitment**

**Respect**

**Communication**



Based in Hamilton, Newcastle NSW, we have continuously provided expert Surveying and Town Planning services throughout the Hunter Region and across NSW since 2007.

We are proud of the strong, collaborative relationships we have built with our clients, offering trusted advice and tailored solutions. We value our long-standing professional relationships with sub-consultants and local authorities, which enables us to customise our approach to each individual project. This ensures positive outcomes that benefit everyone we work with and solidifies why Parker Scanlon is the place where, good people come to get things done!

With over 280 years of combined industry experience, our Team brings a wealth of knowledge and expertise to every project. We pride ourselves on delivering timely and efficient services, regardless of the development's size or complexity. Our Team is driven to excel, as we focus on providing sustainable, cost-effective solutions through streamlined project management and exceptional service delivery.

**Where Good People Come  
to Get Things Done**



# OUR SERVICES

## Town Planning

Our highly skilled Town Planning team are an approved consultant for the City of Newcastle Council in Accelerated Development Applications (ADA). Beyond this, our Planners bring extensive experience in delivering successful outcomes for our clients across all development types. Whether it's residential, commercial, or large-scale developments, our expert Planners provide strategic insights and practical solutions tailored to each site's unique potential.

If you need assistance assessing a site's suitability, our team conducts in-depth evaluations to determine the full scope of development opportunities, ensuring that every project aligns with planning regulations and maximises its potential.

With a deep understanding of legislation, zoning requirements, and the intricacies of local council processes, our Town Planners streamline the entire development journey. By handling complex approvals, navigating regulatory frameworks, and proactively addressing potential challenges, we take the stress out of the planning process. Our commitment to efficiency allows us to provide timely and cost-effective planning solutions that help deliver the client's project vision.

- Accelerated Development Applications
- Approval Pathway Reports
- Building Envelope Modelling
- Clause 4.6 Variation Reports
- Crime Risk Assessments (CPTED)
- Architectural Plan Compliance Reviews
- Planning Feasibility Reports
- Planning Proposals & Development Applications
- Site Investigations
- Social Impact Assessments (SIA)
- Statement of Environmental Effects (SEE)
- Indicative Site Plans
- Waste Management Plans (WMP)







## Land & Hydrographic Surveying

We offer a range of Land Surveying services including, but not limited to, Topographic & Detail Surveys to map all site features including buildings, fixtures and natural surfaces for design and engineering purposes. We can undertake High Water Mark Determinations that accurately establish tidal riparian boundaries by determining the Mean High-Water Mark (MHWM). Also Commercial, Industrial & Residential Building Set-out services to ensure that structures are positioned precisely in relation to design plans and property boundaries.

Our expertise extends to Precision Levelling, using advanced surveying techniques to deliver high-accuracy reporting for 'as-builts' or Works as Executed Surveys, monitoring, and site assessments. Additionally, we conduct Lease Surveys to determine lettable areas for commercial, industrial, and residential properties, ensuring a basis for contractual and legal requirements. Parker Scanlon's commitment to precision and professionalism ensures that every survey provides the essential data needed for successful planning, design, and development.

- Topographic & Detail Surveys
- High Water Mark Determinations
- Hydrographic Surveys
- Commercial/Industrial/Residential Building Set-outs
- Precision Levelling
- Lease Surveys
- Property Management Surveys
- Works as Executed Surveys





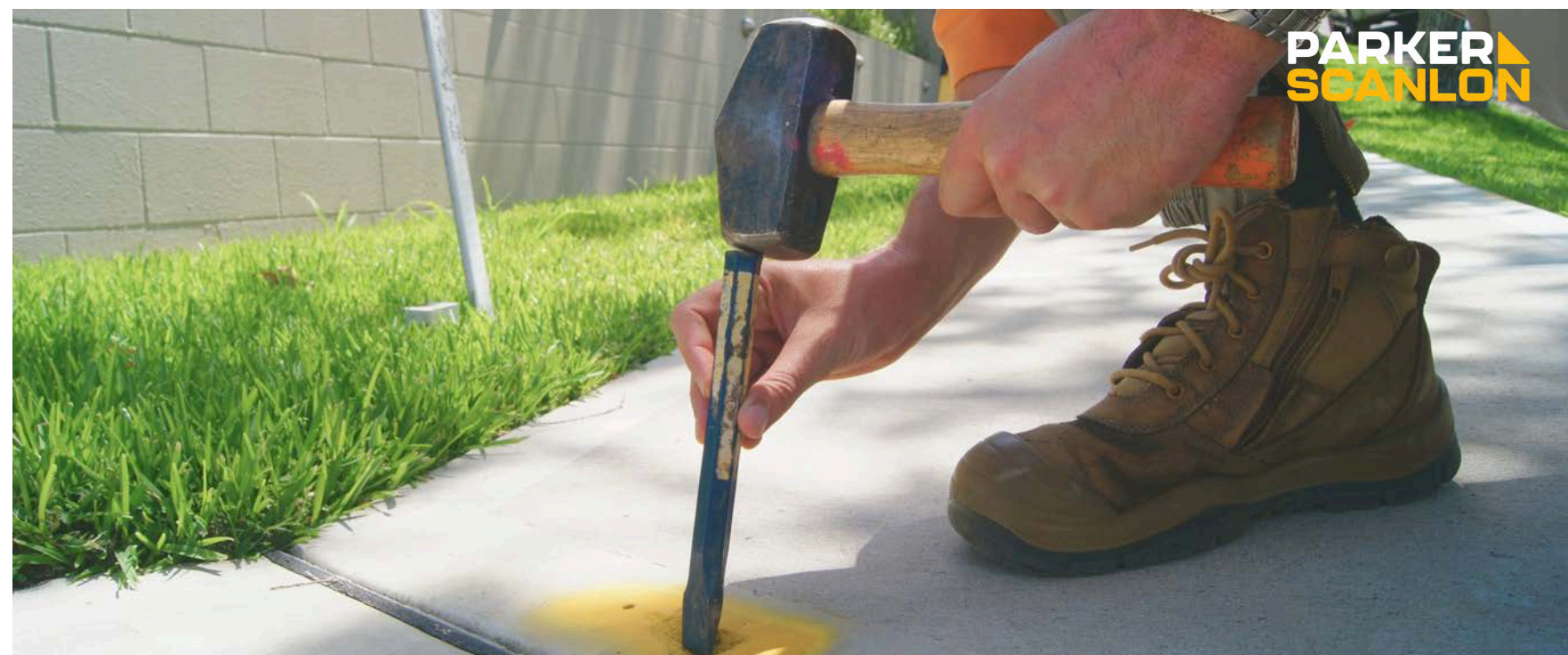
## Cadastral Surveying

Our team includes Surveyors Registered under the Surveying and Spatial Information Act 2002 who are licensed to survey and define land boundaries in NSW. They are assisted by Graduate and Technician Surveyors, Survey Drafting and Administrative staff, and their oversight ensures every survey meets the highest standards of accuracy.

Our Identification Surveys and Reports accurately locate existing structures in relation to property boundaries, identifying encroachments, easements, and encumbrances. This information is essential when buying, selling, or developing land.

Our Easement Surveys establish rights of access or use over land, benefitting councils, utility providers, or neighbouring properties. Whether for legal documentation, property development, or regulatory compliance, Parker Scanlon's cadastral surveying services provides accuracy and expertise you can rely on.

- Identification Surveys
- Solicitor Identification Surveys
- Complex Site Reporting
- Subdivision Surveys (Torrens title, Strata & Community Title)
- Old System/Limited Title Surveys
- Easement Surveys







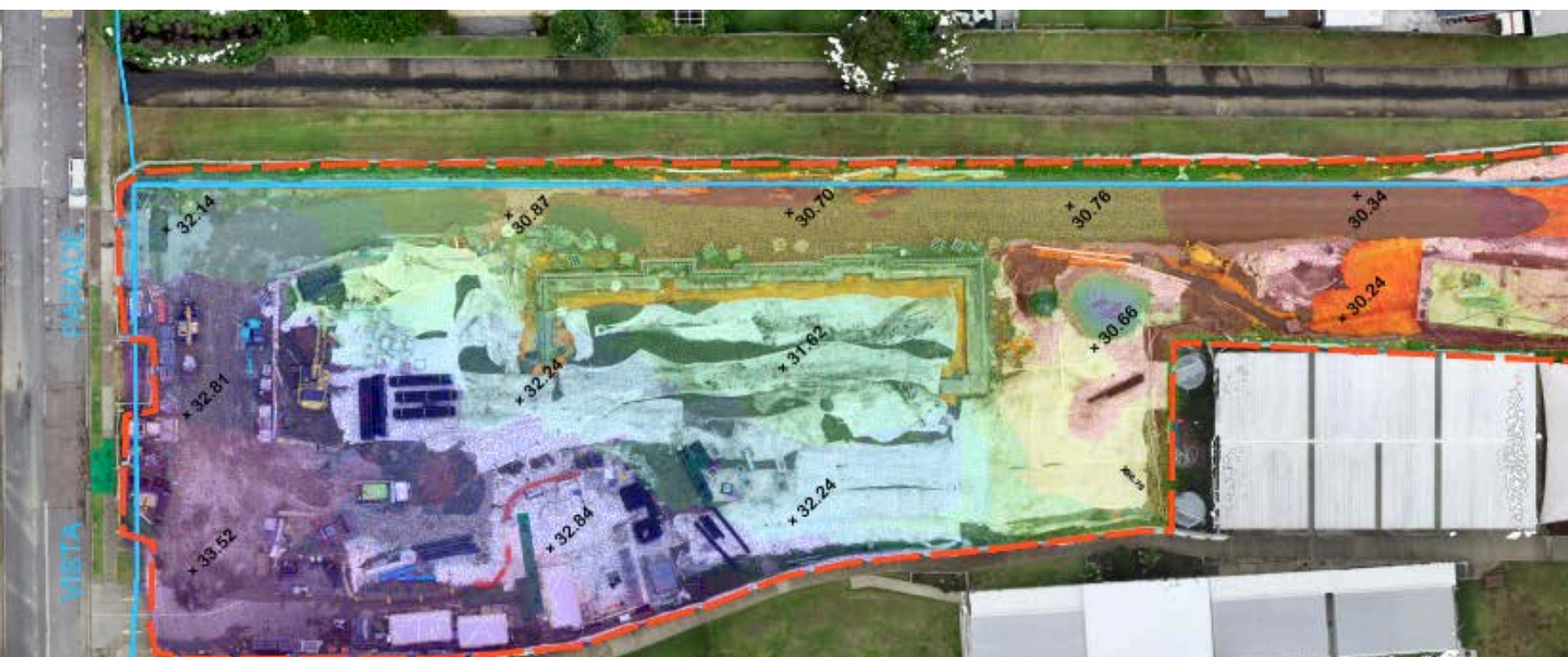
## Digital Mapping

Parker Scanlon delivers precise and innovative surveying solutions, including Digital Mapping services. Our CASA licensed operators utilize UAV/Drone Aerial Surveying to conduct large-scale topographic surveys, monitoring, inspections and provide high-resolution imagery and data.

Our Terrestrial Laser Scanning technology enables the creation of digital twins and 3D reconstructions, capturing large amounts of detailed information for analysis and planning. Our Digital Terrain Modelling and Contour Generation services integrate LiDAR, photogrammetry, and Aerial Laser Scanning (ALS) data to produce Digital Terrain Models (DTMs) essential for 3D modelling, planning, and design.

Our dedicated team, ensures the seamless coordination of fieldwork tasks, working closely with builders and clients to deliver precision and reliability in every aspect of our surveying services. Whether it's digital mapping, boundary marking, or subdivision planning, Parker Scanlon provides the expertise and technology needed to get the job done.

- UAV/Drone Surveying
- Terrestrial Laser Scanning
- Contour Generation
- Digital Terrain Modelling





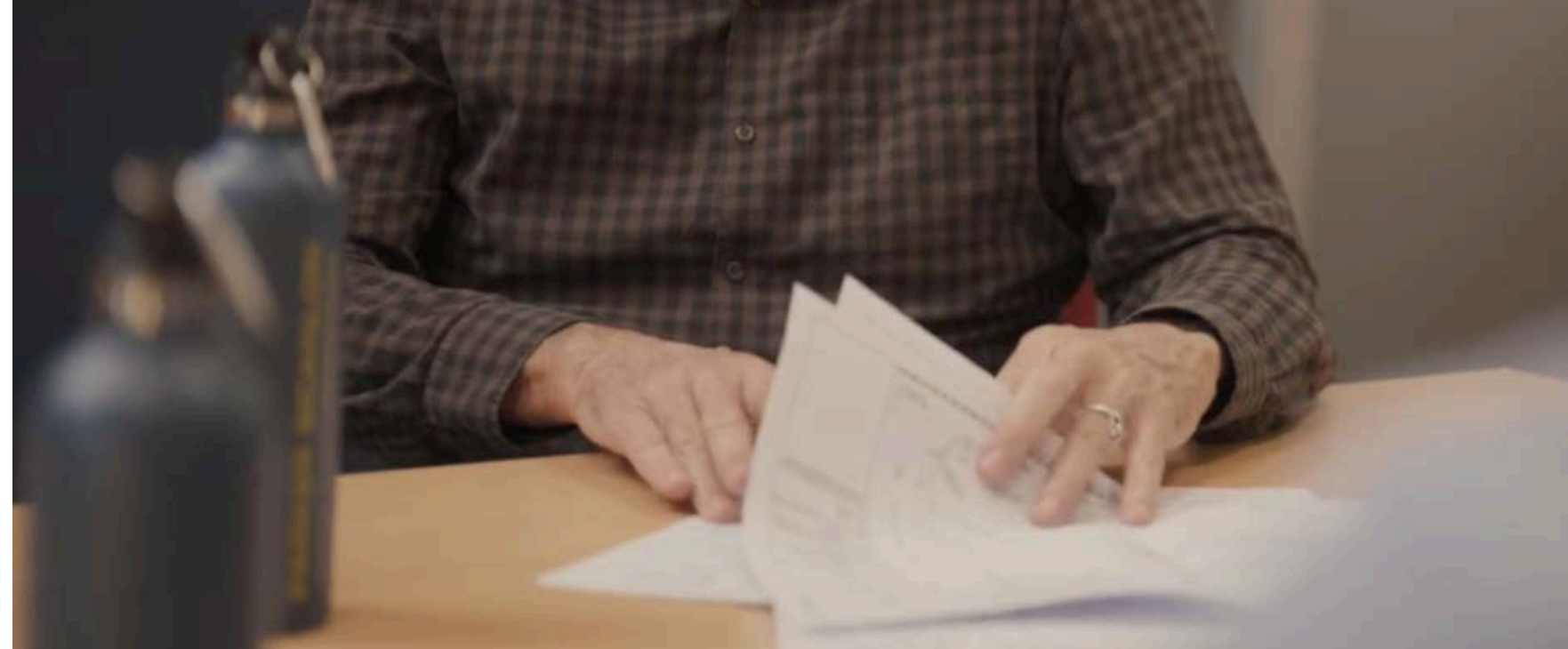
## Drafting

Our Drafting Team delivers precise, high-quality plans that help visualise your project and support our Town Planning Team in securing approvals. These include detailed site plans, subdivision layouts, and small-scale development drawings tailored to meet council requirements and client specifications supporting survey services. Using advanced CAD software and a collaborative approach, we ensure drawing accuracy for project purpose. Whether for development applications, planning proposals, or concept designs, our drafting services provide the technical foundation for successful planning and construction.

Informed by our Town Planning team's in-depth understanding of legislation, zoning requirements, and the complexities of local council processes, our drafting services facilitate a streamlined and efficient approach to designing your build.

Our commitment to quality and timeliness allows the delivery of cost-effective drafting solutions essential to the development process.

- Site Plans
- Draft Landscape Plans
- Shadow Diagrams
- Indicative Site Plans
- Building Envelope Plans
- Small Scale Building Design & Alterations/Extensions
- Secondary Dwelling Design





# Our Workplace

Parker Scanlon has evolved from a small group of five dedicated individuals in 2007, into a thriving team of 27 close-knit staff. With growth, the company has maintained its unmatched atmosphere, where collaboration and mutual respect remain at the heart of everything we do. Our team commitment to upholding our core values has been instrumental in building strong client relationships, delivering exceptional results, and fostering a workplace culture that embraces core values.

Our dynamic team is intentionally composed of highly skilled professionals, including Registered Surveyors and Technicians, a PIA Member, Architect, Drafting Technicians, and dedicated Administrative staff. This diverse range of in-house expertise fosters collaboration and enables us to approach each project with confidence and knowledge. By facilitating discussion and a team-based approach we can tackle diverse and challenging projects. This approach consistently delivers project oriented services and solutions.



## Wellness in the Workplace

At Parker Scanlon, we believe in more than just delivering precise results. We believe in a healthy work life balance, through building a team that thrives on collaboration, innovation, and excellence. Our workplace is built on mutual respect, a commitment to quality, and a shared passion for the industry.



## Professional Growth:

We support continuous learning, training, and development to help our team excel at their chosen career.

## Teamwork and Support:

Our close-knit team works together to overcome challenges and celebrate successes.

Whether it is in the field or behind the scenes, working at Parker Scanlon means being part of a company that values team contributions and invests in their success.

## Work-Life Balance:

We understand the importance of balancing hard work with time for staff and family.





## Surveying & Town Planning

▲ Across New South Wales



**SURVEYING • TOWN PLANNING • PROJECT MANAGEMENT**



[www.parkerscanlon.com.au](http://www.parkerscanlon.com.au)



02 4969 6995



[surveys@parkerscanlon.com.au](mailto:surveys@parkerscanlon.com.au)  
[planning@parkerscanlon.com.au](mailto:planning@parkerscanlon.com.au)



17 William Street, Hamilton NSW 2303 ABN. 36 124 624 022  
PO Box 986, Hamilton NSW 2303